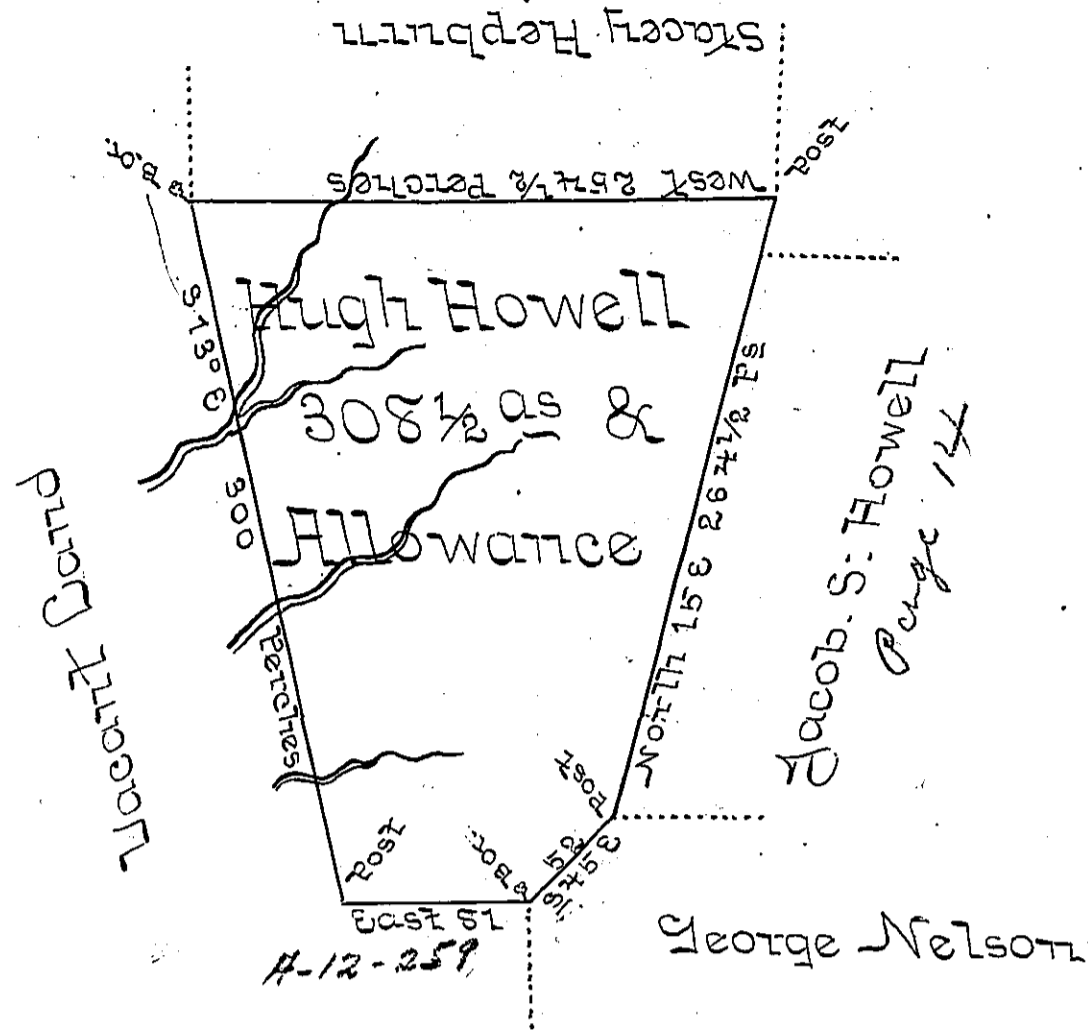


Page 15



A Draught of a Tract of Land called Sugar Tree Grove. (being part of a larger Tract of the same name) Situate on the head waters of little Cobs and at the head of the S.W. Branch of Chest Creek about three Miles above the Forts thereof about two Miles west from the S.W. Corner of the Proprietaries Survey at the Chest adjoining Lands of Stacey Hepburn Jacob S: Howell, George Nelson & Samuel Pleasant's Warrant in the County of Bedford containing three hundred & eight Acres and an half and the usual Allowance of six Percent for Roads &c. Surveyed the 22<sup>d</sup> Day of June 1773 for Hugh Howell in pursuance of a Warrant Dated the 13<sup>th</sup> Day of May in the same year by  
 To John Lukens Esq Surveyor }  
 General of Pennsylvania &c } Thomas Smith D.S.

IN TESTIMONY that the above is a copy of the original remaining on file in the Department of Internal Affairs of Pennsylvania, made conformably to an Act of Assembly approved the 16th day of February, 1833, I have hereunto set my Hand and caused the Seal of said Department to be affixed at Harrisburg, this

— eighth — day of — October — 1897 —

*James W. Latta*  
 Secretary of Internal Affairs.